



## FURTIV A

Aluminum structure sconce with white paper diffusing material. Collection includes suspension, table and floor lamp (Furtiv S, Furtiv LP, and Furtiv LH).

Design by: Gaëlle Lauriot-Prévost and Dominique Perrault

### DETAILS.

**FINISHES IN: BRUSHED ALUMINUM OR MIRROR NICKEL**

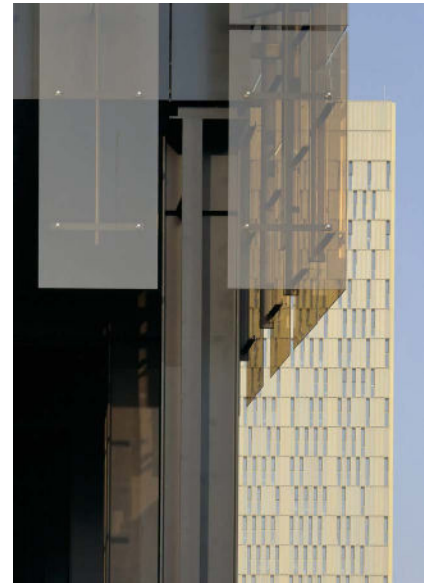
**OVERALL SIZE: 9.8" W X 5.5" D X 20.5" H**

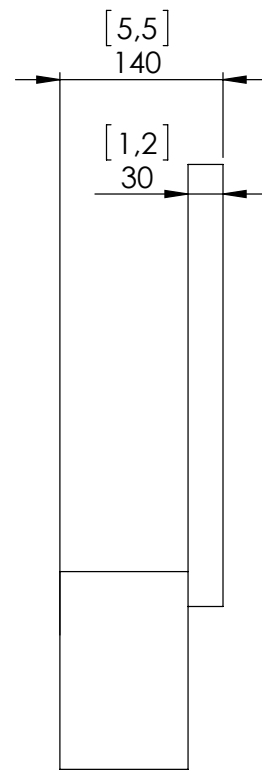
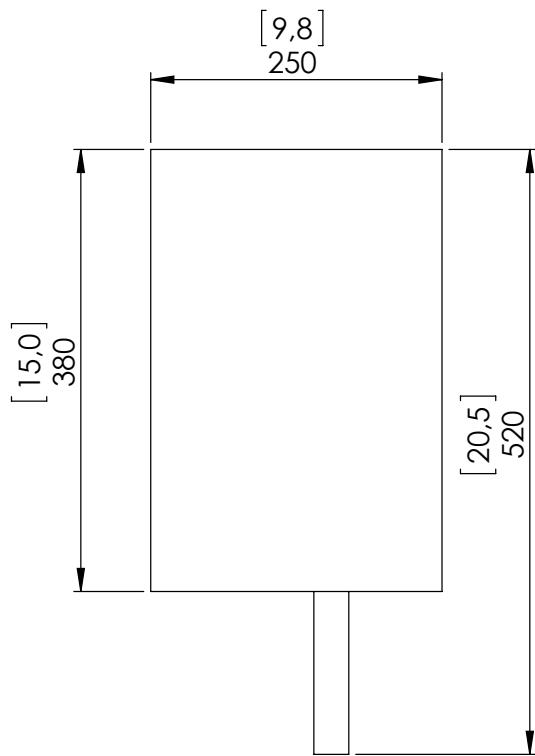
**29W, 2700K 1400 LM 95 CRI  
0-10V DIMMING ONLY.**

**\*DIMMING MODULE REQUIRED WITH 24V REMOTE DRIVER.**

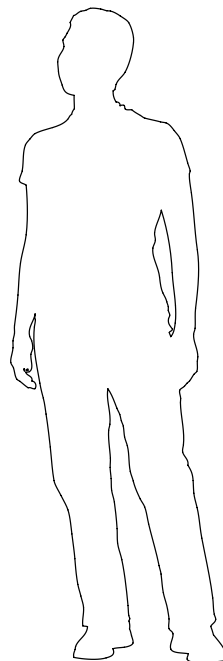
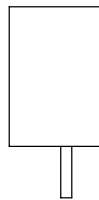
**WEIGHT: 13.3 LBS**

FURTIV A





Dimensions in mm [inches]



Silhouette : 175cm / 69in