

## RC150

RC150 is a small scale fixture with eyelid face for maximum glare control and forward light throw. RC150's light source is CR8 tool-free plug-in LED lamp. Metal collar standard mounting for set in wood/drywall/stone - pour kit for concrete available.

### DETAILS.

#### MATERIALS AVAILABLE IN:

AL - ALUMINUM

BR - BRASS

CU - COPPER

SS - STAINLESS STEEL

#### FINISHES AVAILABLE IN:

N - NATURAL

CA - CLEAR ANODIZE (ALUM ONLY)

BA - BLACK ANODIZE (ALUM ONLY)

BK - BLACK POWDERCOAT

WT - WHITE POWDERCOAT

PTB - PATINA BROWN (BRASS ONLY)

PTK - PATINA BLACK (BRASS ONLY)

C - CUSTOM

SHADE SIZE: Ø1.6" X 2.7" D

#### LED MODULE OPTIONS, CRI 93:

1W - 65 LM

2W - 130 LM

3W - 195 LM

#### COLOR TEMPS AVAILABLE:

2700K, 3000K, 4000K, 5000K

BEAM OPTIONS: 18°, 25°, 40°

FACE OPTIONS: EYELID (STANDARD), GLOW, OPEN, SQUARE

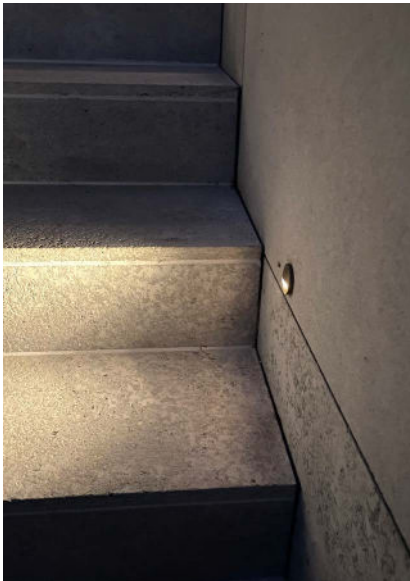
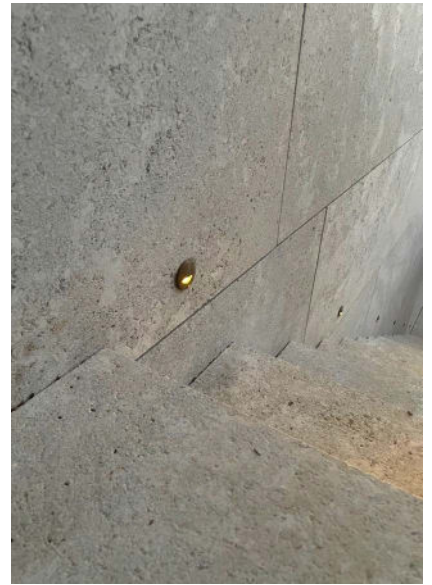
IP67 - SUITABLE FOR WET LOCATIONS.

REMOTE LOW VOLTAGE TRANSFORMER REQUIRED - DIMMING 10-100%  
MLV/ELV.

\*OTHER ACCESSORIES AVAILABLE.

ETL LISTED

RC150



**II P L**

PLUGLIGHTING.COM  
INFO@PLUGLIGHTING.COM



5665 MELROSE AVENUE  
STE 108 LOS ANGELES 90038

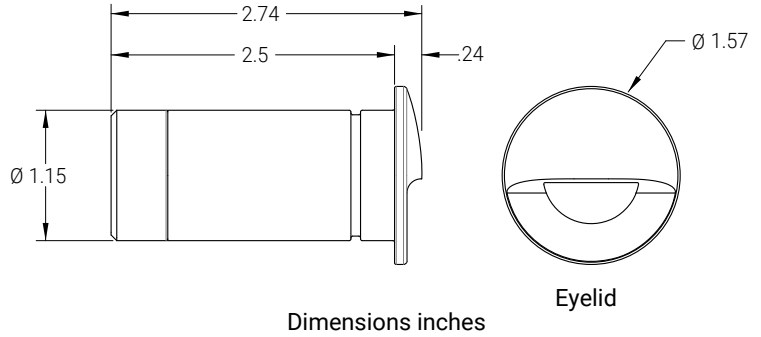
P. 323 467 5635  
F. 323 467 5634

# RC150

## Recessed - 12V

### Specification

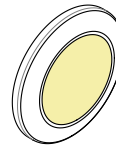
Light Source	CR8 Led Lamp  Renewable Product
LED Rated Life	50,000 hours average **
Power Consumption	1W, 2W, 3W Options
CCT	2700K, 3000K, 4000K, 5000K
CRI	93
Light Output	65, 130, 195 (3000K Open Face)
Input	10-15 Vac
Lens	Borosilicate Glass
Lamp holder	GU5.3
Operating Temperature	-31F to 130F (-35C to 54C)
Maintenance	Tool Free Plug-in LED Lamp
Thermal Management	Fixture is utilized as heat sink
Fixture Construction	CNC Machined from Solid Billet
Ingress Protection	IP67
Certification	



Eyelid



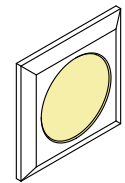
Glow Halo Effect



Open



Eyelid




Square 1.5 inch

\* IES LM-80 Standard ensures led light source will provide lumen maintenance and color performance.

\*\* LED life is defined as the time to 70% lumen maintenance (L70)

### Low Voltage Transformer Required Dimming 10-100% MLV, ELV

CR8 Led Lamp  Renewable Product *End of lamp life  
Replace lamp electronics  
Re-use lamp body*

### Ordering Guide

Example: RC150-AL-27-25-3-HX-OP-S-BK Aluminum, 2700K, 25deg Beam, 3Watt, Hex Cell, Open Face, Black Powder Coat Finish

RC150								
Prefix	Material	CCT	Beam	Watt	Accessory	Face	Mounting	Finish
AL - Aluminum	27 - 2700K	18 - 18 deg	1 - 65 lm	00 - None	G - Glow	S - Standard	N - Natural	
BR - Brass	30 - 3000K	25 - 25 deg	2 - 130 lm	HX - Hex Cell	O - Open	PK - Pour Kit	CA - Clear Anodize (Alum Only)	
CU - Copper	40 - 4000K	40 - 40 deg	3 - 195 lm		E - Eyelid		BA - Black Anodize (Alum Only)	
SS - Stainless	50 - 5000K				S - Square		BK - Black Powder Coat	
							WT - White Powder Coat	
							PTB - Patina Brown (Brass Only)	
							PTK - Patina Black (Brass Only)	
							C - Custom	



Document Number: S-RC150  
10121