



MICRO C

Microspot with articulating base and magnetic ball joint that offers light efficiency to shop windows, display units, and other small space.

DETAILS.

FINISHES: BLACK, WHITE, CHROMIUM, GOLD, BRUSHED NICKEL

*CUSTOM RAL AVAILABLE WITH MINIMUM QUANTITY.

SHADE SIZE: 0.6" X 0.8" H; 1.2" BASE
OVERALL HEIGHT: 1.5"

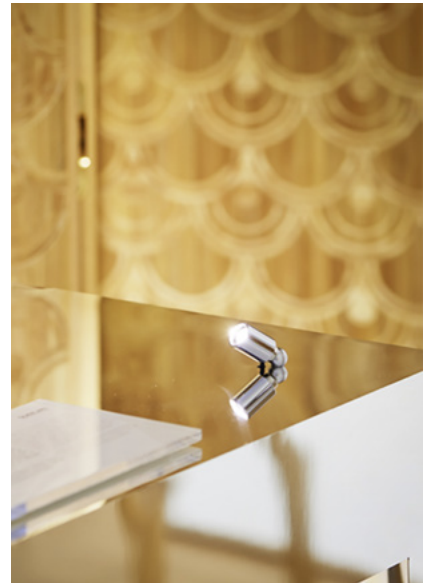
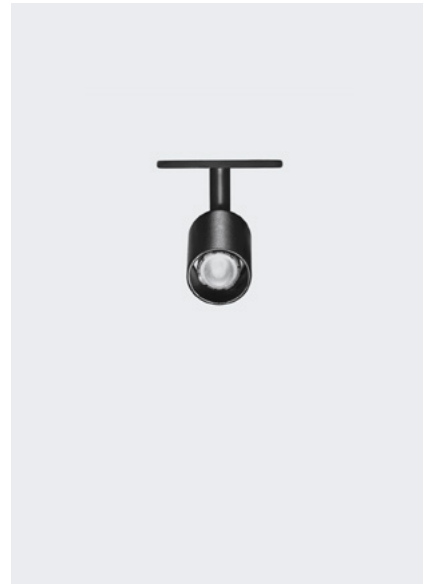
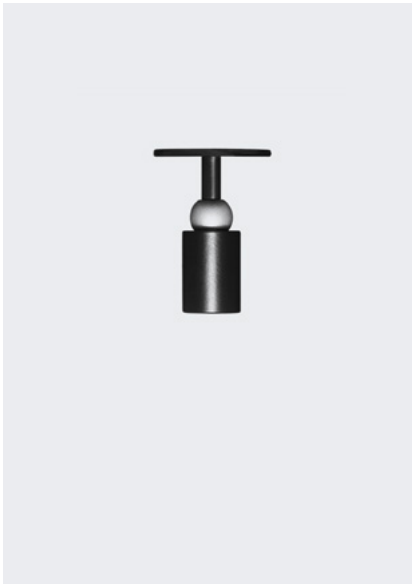
1.5W MAX LED, 150LM, 0-10V DIMMING
CONSTANT CURRENT 500MA - CRI 80 OR 90

COLOR TEMPERATURE AVAILABLE:
2400K, 2700K, 3000K, 3500K, 4000K, 5000K

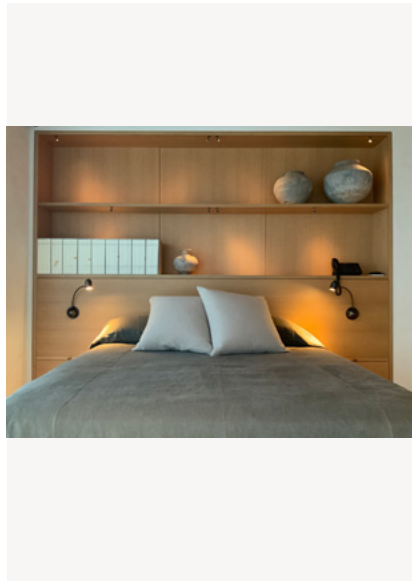
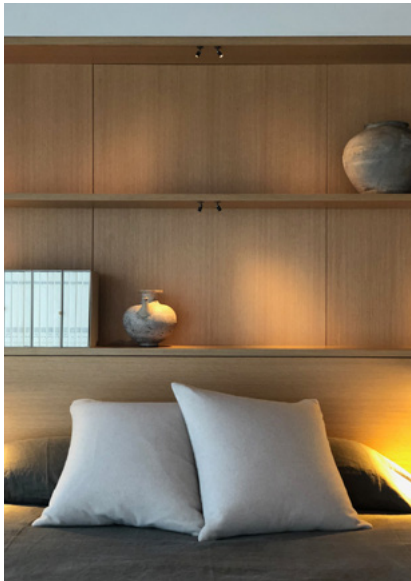
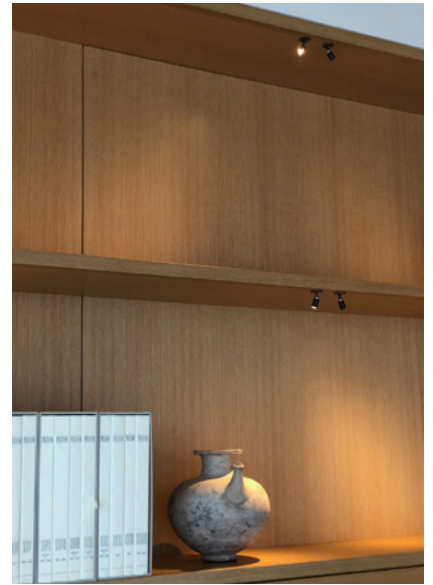
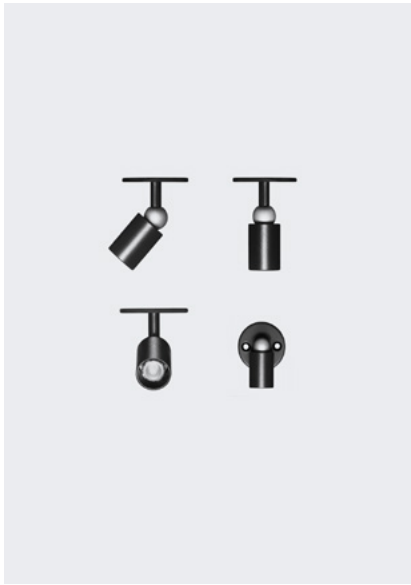
AVAILABLE DEGREES:
16 , 24 , 40 , ELLIPTIC

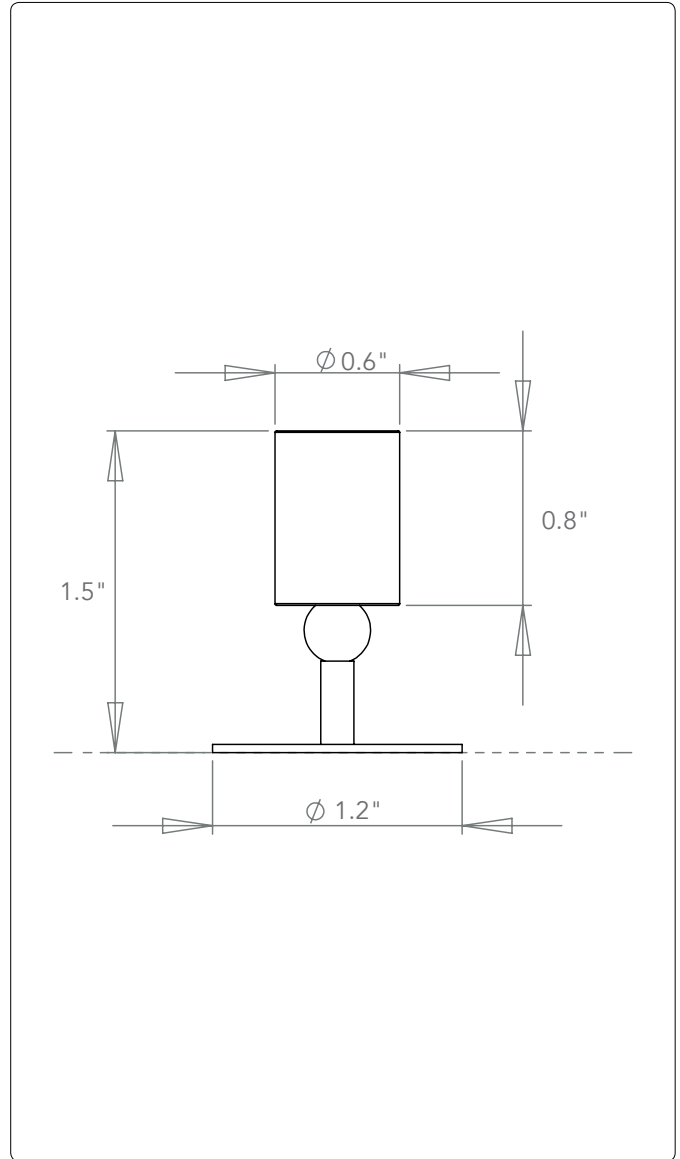
IP40 - FOR INTERIOR USE ONLY.
ETL LISTED

MICRO C



MICRO C





↓ PRODUCT DESCRIPTION

This microspot, part of the «C» range, has a magnetic ball joint and offers a high degree of lighting efficiency despite its small size. Used for precision luminous flux, its sleek, miniaturized design makes it very easy to fit in shop windows, display units, and other small spaces.

↓ OUTPUT

1,5W 150lm

↓ LUMENS

↓ CRI

IRC80 IRC90

↓ POWER SUPPLY

500mA 1-10V DMX

↓ DIMMING

↓ DEGREES

16° 24° 40° ELL

↓ IP RATING

IP 40

↓ USE

↓ COLOUR TEMPERATURE

2400K 2700K 3000K 3500K 4000K 5000K

↓ SOURCES

- Luminous flux according to Bining: 150 lumens;
- Colour temperature: 2400 K to 5000 K;
- Service Range: 70 % of nominal flux after 25 000 hours;
- Colour Rendering Index: CRI 80 or CRI 90.

↓ OPTICAL CHARACTERISTICS

- PMMA acrylic lens, efficiency ~90 %;
- Available degrees: 16°, 24°, 40° & Elliptic.

↓ ELECTRICAL CHARACTERISTICS

- Constant current supply: 500 mA;
- Supply connection: Polarised output connectors;
- Power consumption to 1.5W max, excluding supply.;
- Electrical Classification: Class III SELV device.

↓ MECHANICAL CHARACTERISTICS

- Articulating base, patented magnetic ball joint;
- Mounting on hook;
- Operating temperature: -5° +40°;
- ROHS components;
- Interior use only.

↓ SPECIFICITIES

- Electrolytic treatment available;
- 3 years guarantee.

↓ CLASSIFICATION

Product Ref.	SC000		
Specification	A		
Colour	Black		BK
	White		WH
	Chromium		CU
	Gold		CU
	Brushed Nickel		CU
	RAL		CU
Colour temperature	2400K		24
	2700K		27
	3000K		30
	3500K		35
	4000K		40
	5000K		50
Degrees	16°		16
	24°		24
	40°		40
	Elliptic		EL
REFERENCE	SC000 - A - BK - 24 - 16		