



## 928ML MONOPOINT OPTICAL PROJECTOR

This Surface framing Projector with a Monopoint mounting system, allows white high color rendering LED light to enhance art. The LM Lighting Modules include the driver, LED Chip, proprietary optics and cooling system. 928ML provides rotational adjustment using lockable fastening systems. A dual heat sink technology provides optimum LED cooling. A separable beam mount wiring box is provided to house the LED Driver. A 4" square deep junction box is provided to house the LED Driver hidden above ceiling. The separable J-Box includes an adjustable mud ring and accommodates a ceiling thickness from 5/8" to 1-1/4".

### DETAILS.

#### AVAILABLE IN:

ALU – NATURAL ALUMINUM

BLK – BLACK

WHT - WHITE

5 9/16"-6 11/16"W (DEPENDING ON BEAM SPREAD) X 3 7/16"H

1 X 20W LED, 120/277 VAC INPUT

CANOPY SHAPE: SQUARE, ROUND OR RECTANGULAR

LIGHT MODULE (DIMMER): 2 WIRE FORWARD/REVERSE PHASE (2% OR 18%) OR 4-WIRE/ECOSYSTEM

COLOR TEMP: 2700K OR 3000K

CRI: 90 OR 98

OBJECTIVE LENSES: 12°, 25°, 45°, 60°, 90°

#### LIGHT BORDER:

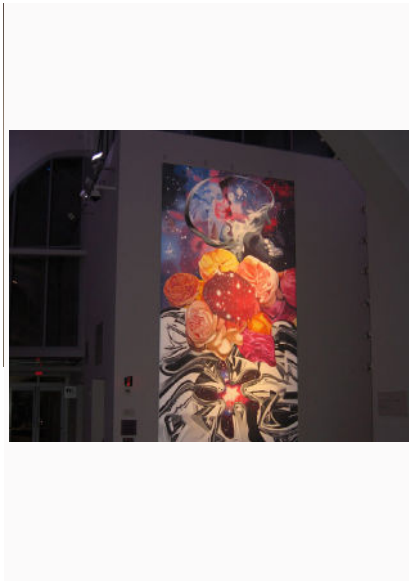
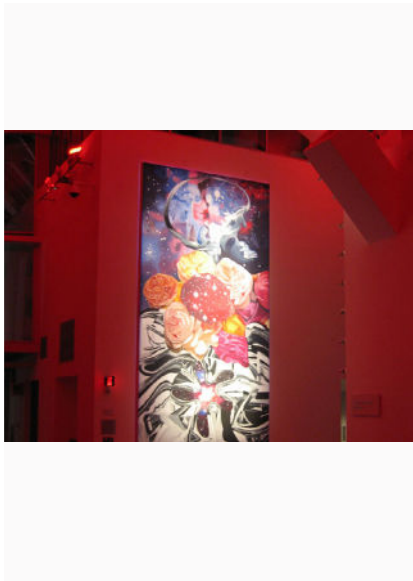
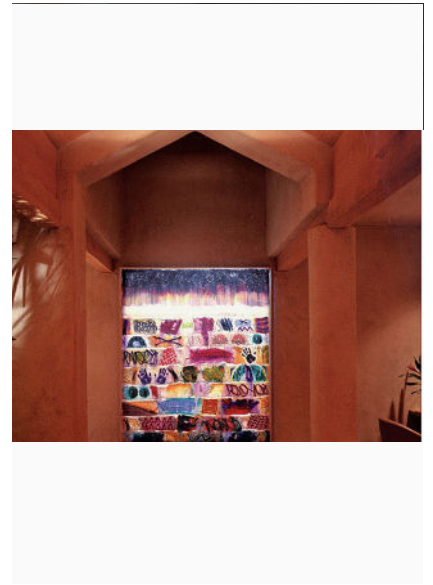
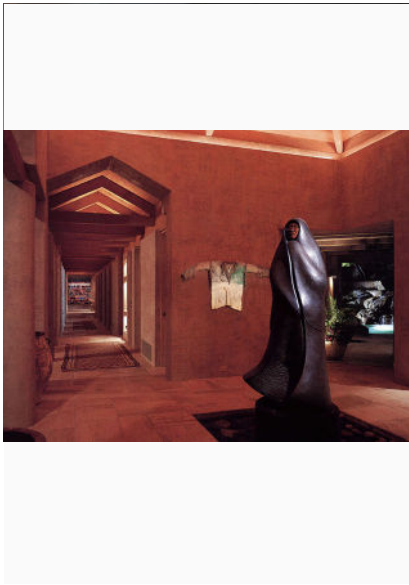
FB (STANDARD) – FOCUSED LIGHT BORDER

FI – FADE IN@ LIGHT BORDER

\*LIGHT CONTROL ACCESSORIES AVAILABLE.

UL LISTED, TITLE 24 JAB – DAMP LOCATION

928ML MONOPOINT OPTICAL PROJECTOR



Wenlux® 928ML  
Monopoint Optical Projector  
LED

The Wenlux® 928ML is a Surface framing Projector with a Monopoint mounting system. A white high color rendering LED light was discriminately selected to enhance art. A shaped light mask framed to art accentuates focus. Precision ground lenses focus upon independently locking light masking shutters for a securely shaped Focused Light Border "FB" (standard). For our proprietary Fade In® Light Border specify "FI."

The Wenlux LM2 (2 wire) and LM4 (4 wire) Lighting Modules are inseparable. The LM Lighting Modules include the driver, LED Chip, proprietary optics and cooling system. Lighting Modules accept the Projector (Adapter Cone) to which variable beam spread Objective Lens Focus Tubes are positioned within to highlight subject of many sizes and distances.

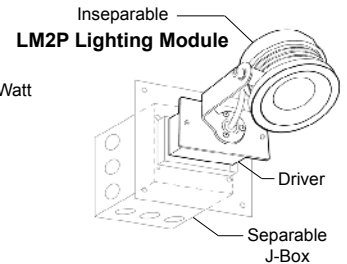
928ML provides rotational adjustment using lockable fastening systems. A dual heat sink technology provides optimum LED cooling. A 4" square deep junction box is provided to house the LED Driver hidden above ceiling. The separable J-Box includes an adjustable mud ring and accommodates a ceiling thickness from 5/8" to 1-1/4".

Patent 9458991 B2  
Wendelighting reserves the right to make changes without notice.



**LM2P LIGHTING MODULE SPECIFICATIONS (CA T24-JA8)**

- Power:** 120/277 VAC Input - 20 Watts
- J-Box:** Deep Junction Box on Mounting Platform with Adjustable Mud Ring Included
- Driver/LED:** LM2P with 2790 Chip and Primary Optics JA8 Tested - 1300 Lumens @ 500mA (for tested life) - 67 Lumens/Watt (Estimated 1200 Lumens @ 450mA) JA8 Allowance on all LED Chip Options
- Optics:** Proprietary
- Luminaire:** Aluminum
- Dimmer:** 2 Wire Forward / Reverse Phase
- Mounting:** Ceiling - Wall
- Listings:** - UL / CUL - Damp Location - Dead End or Daisy Chain Feed Through Class 1 Wiring Only (No Additional Conductors)  
- California Title 24 Residential Lighting JA8 Recessed Tested Listing (See [wendelighting.com/resources](http://wendelighting.com/resources))



**MONOPOINT OPTICAL FRAMING PROJECTOR OPTIONS**

928	ML	LM					
<b>Adapter Cone:</b>	<b>Monopoint Canopy Shape:</b>	<b>Lighting Module: (By Driver Type)</b>	<b>LED Chip Options (Chip Values) (@ 450mA:)</b>	<b>Objective Lens Focus Tube (Beam Spread):</b>	<b>Light Border:</b>	<b>Fixture Color:</b>	<b>Light Control Accessories:</b>
<b>Optical Framing Projector</b>	<b>SQ</b> Square  <b>RD</b> Round  <b>RC</b> Rectangular	<b>LM2P</b> (Standard) Philips Xitanium 2 Wire Driver Forward / Reverse Phase Dimmable 2% Use ELV Dimming 120/277V In 450mA Out Listed with CA Title 24 JA8  <b>LM4L</b> Lutron EcoSystem PEQ0 4 Wire Driver Dimmable 0.1% 120/277V In 450mA Out Requires EcoSystem Dimming Listed with CA Title 24 JA8  <b>LM2H</b> Hatch LC25-0500P 2 Wire Driver Forward / Reverse Phase Dimming 18% 120V In 450mA Out LM Not Listed with CA Title 24 JA8 Use Reverse Phase for Low Loads	<b>2798</b> 2700K 98 CRI 1400 Lumens R9 93  <b>3098</b> (Standard Chip) 3000K 98 CRI 1500 Lumens R9 88  <b>2790</b> 2700K 90 CRI 1600 Lumens R9 54  <b>3090</b> 3000K 90 CRI 1700 Lumens R9 60	<b>12°</b>  <b>25°</b>  <b>45°</b>  <b>60°</b>  <b>90°</b>	<b>FB</b> (Standard) Focused Light Border  <b>FI</b> Fade in® Light Border	<b>ALU</b> Natural Alluminum  <b>BLK</b> Black  <b>WHT</b> White	<b>SH</b> Extra Shutter (1)  <b>MK</b> Light Mask Kit  <b>SC</b> Scissors  <b>UV</b> Ultraviolet Blocking Lens  <b>1F</b> 100 Kelvin Warming Filter 39mm Diameter

**Color Filter Options:** Additional 39mm Diameter Dichroic Color Filters Available Through Rosco

Philips and Xitanium are Trademarks of Signify  
Lutron, Hi-lume, Tu-Wire, and EcoSystem are Trademarks of Lutron Electronics Co., Inc.

# Wenlux® 928ML Monopoint Optical Projector LED

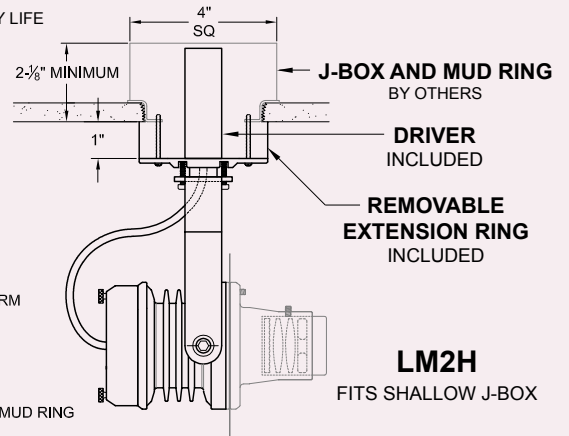
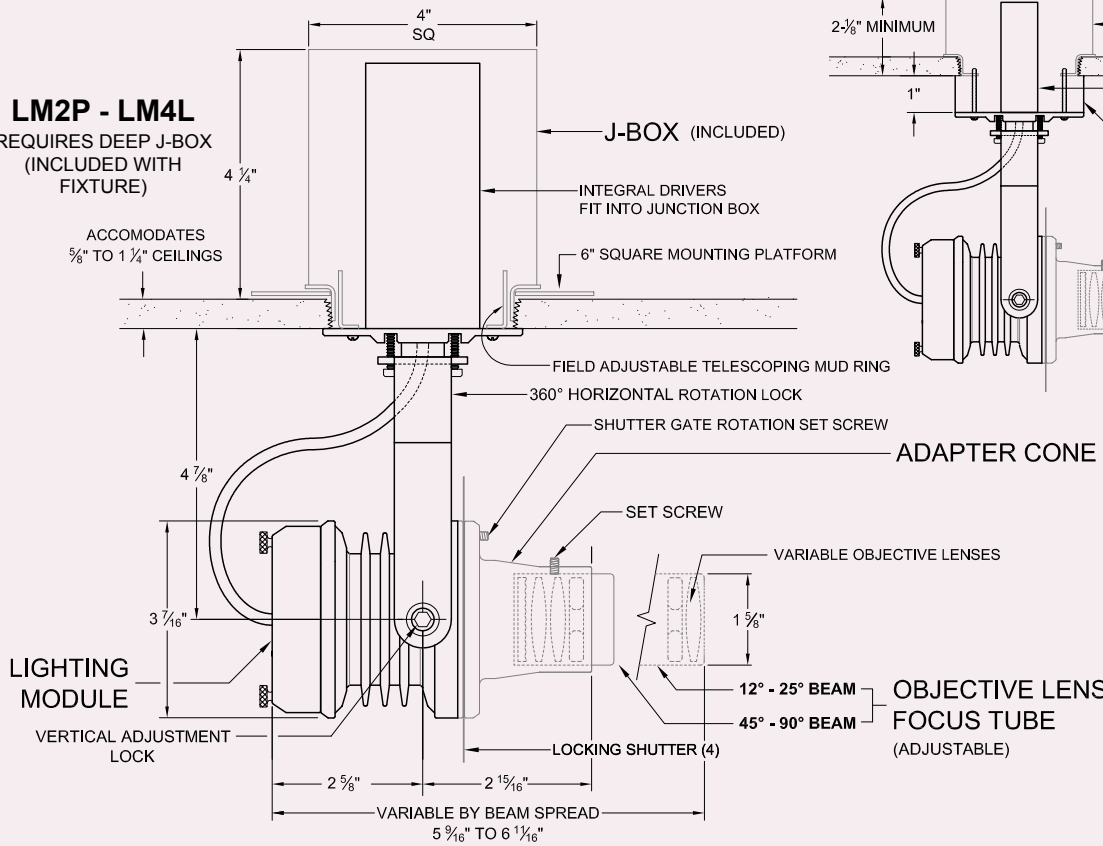
## ATTIC AND BUILDING ENVELOPE INSTALLATION

MINIMUM R38 INSULATION SURROUNDING AND COVERING RECESSED J-BOX REQUIRED FOR ASSEMBLY LIFE

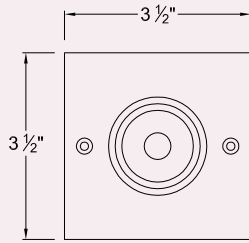
### LM2P - LM4L

REQUIRES DEEP J-BOX (INCLUDED WITH FIXTURE)

ACCOMMODATES 5/8" TO 1 1/4" CEILINGS

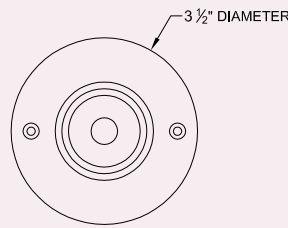


## SPECIFY CANOPY SHAPE



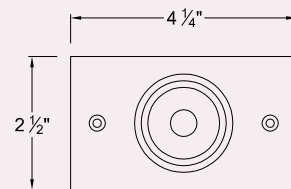
### SQ SQUARE

FITS 3" DIAMETER MUD RING OVER DEEP J-BOX



### RD ROUND

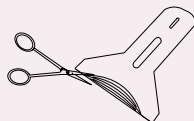
FITS 3" DIAMETER MUD RING OVER DEEP J-BOX



### RC RECTANGULAR

FITS 2-1/4" x 3-3/4" SINGLE DEVICE MUD RING OVER DEEP J-BOX

## LIGHT CONTROL ACCESSORIES



### SH

FIELD CUTTABLE CURVED ETCH SHUTTER



### LM

LIGHT MASK KIT FOR MASKING GENERAL FORM OF NON-RECTILINEAR OBJECTS



### SC

SCISSORS



### UV

ULTRAVIOLET BLOCKING LENS



### 1F

100 KELVIN WARMING FILTER

PATENT 6,612,0761B2, ADDITIONAL PATENTS PENDING