



## DIAMANT

Wall spotlight with aluminum cubic structure and projected light direction of 56° and 40° beam angle.

Design by: Joseph Dirand

**DETAILS.**  
**FINISH: SATIN WHITE**

**SIZE: 5.5" W X 6.4" D X 5.7" H**

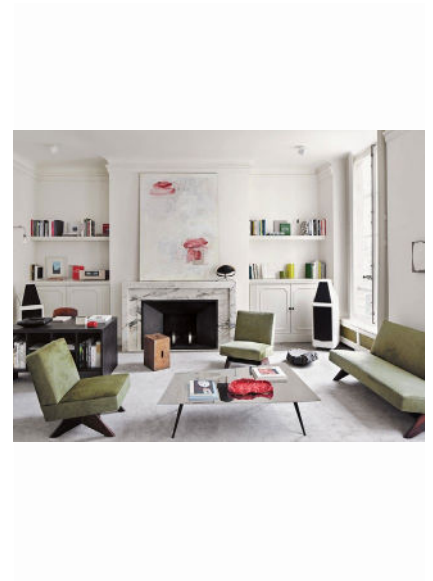
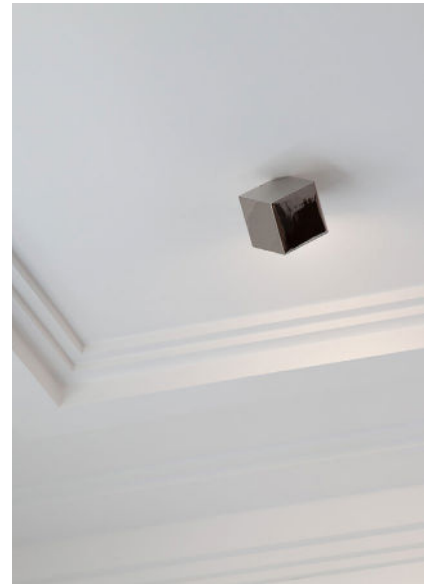
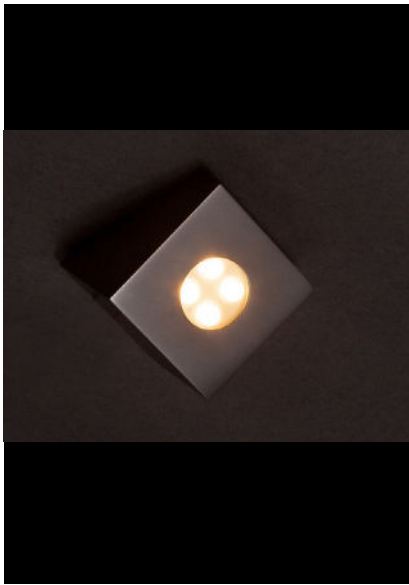
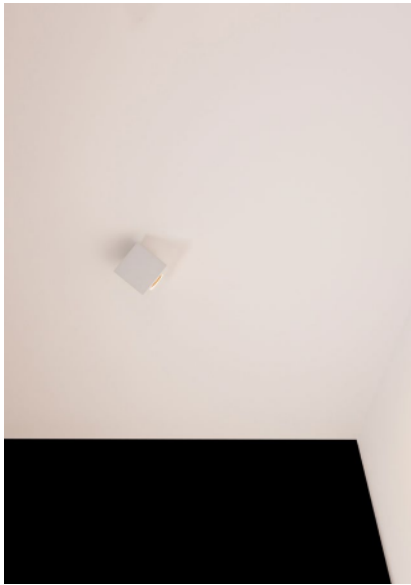
**\*DOES NOT COVER US JUNCTION BOX - MUDKIT REQUIRED.**

**12W 2700K, 0-10V DIMMING**  
**1000 LM, 98 CRI**

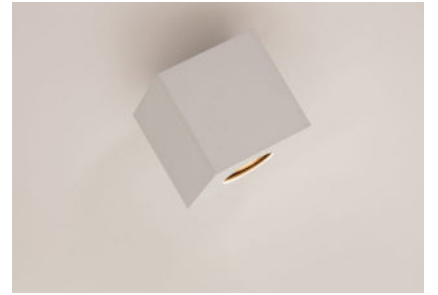
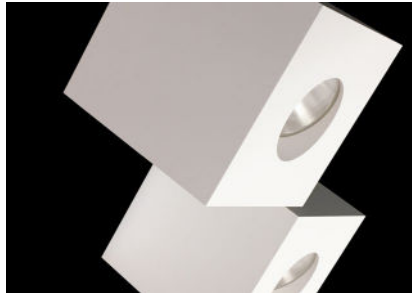
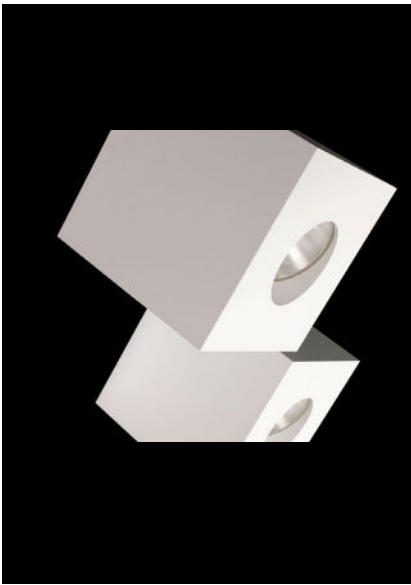
**\*500MA REMOTE POWER SUPPLY REQUIRED FOR DIMMING.**

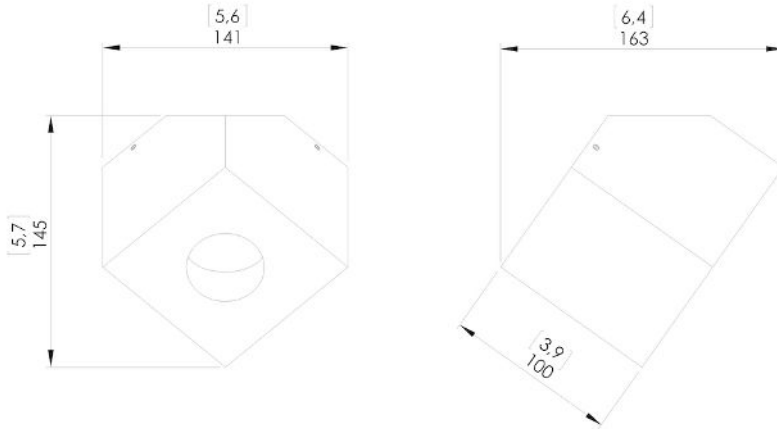
**WEIGHT: 5.5 LBS**

# DIAMANT



## DIAMANT





Dimensions in mm [inches]



Silhouette : 175cm / 69in