

AUSTERE ELEMENTS

Inspired by molecular compounds, this light fixture is available in X, Y, + or - structures. Its unique base connects up to 13 elements using a single power point. Surface or remote mounting driver – must specify. Spacers available in different lengths and height (three lengths) for complete freedom when creating compositions. There are no limits to the changes and extensions you can make. Customization available - please call showroom for more info.

Design by: Hans Verstuyft

If necessary, please reinforce ceiling.

DETAILS.

FRAMES AVAILABLE IN: BRASS -OR- BLACK

LEATHER AVAILABLE IN: MODUS BLACK -OR- MODUS OAK

POWER CORD AVAILABLE IN: BLACK -OR- WHITE

STEEL CABLE AVAILABLE IN: SILVER

SHADE: Ø1.6" X 2" H

ARM LENGTHS AVAILABLE: 9.8", 19.7", 29.5"

STANDARD ROSE: Ø2.4" (DOES NOT COVER US J-BOX.)

US SCREWED ROSE: Ø4.5"

STEEL CABLE LENGTHS: 19.7", 39.3", 78.7", 118" -OR-157.5"

POWER CABLE LENGTHS: 19.7", 39.3", 78.7", 118" -OR-157.5"

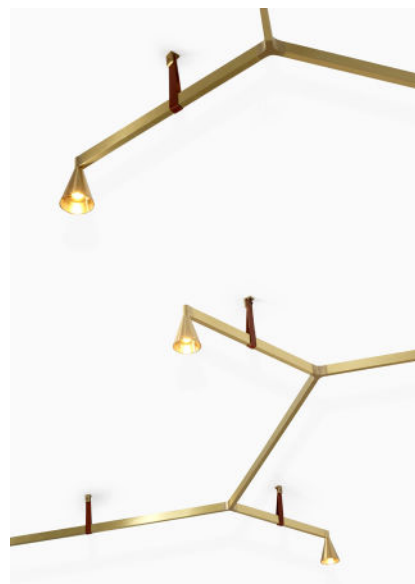
EACH LIGHT ELEMENT:

6.2W LED (INCLUDED), 2700K 600 LM

110V 93 CRI / 350MA, IP50

***1-10V DIMMABLE DRIVER AVAILABLE.**

LINE C



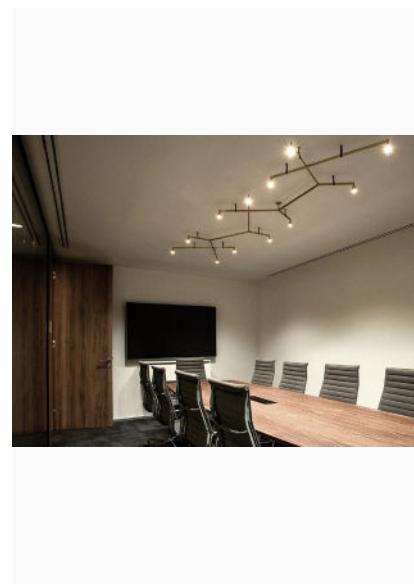
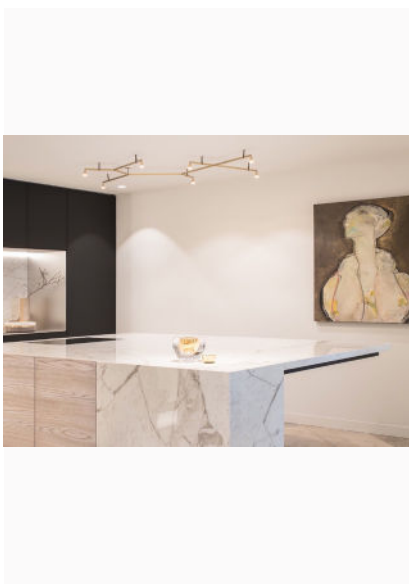
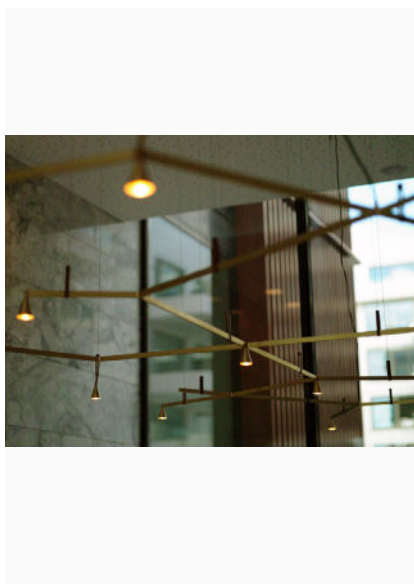
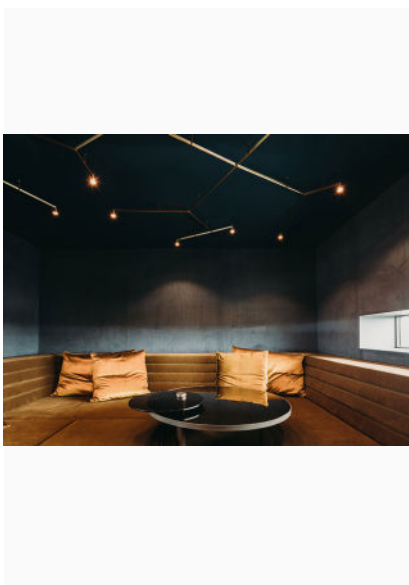
II PL

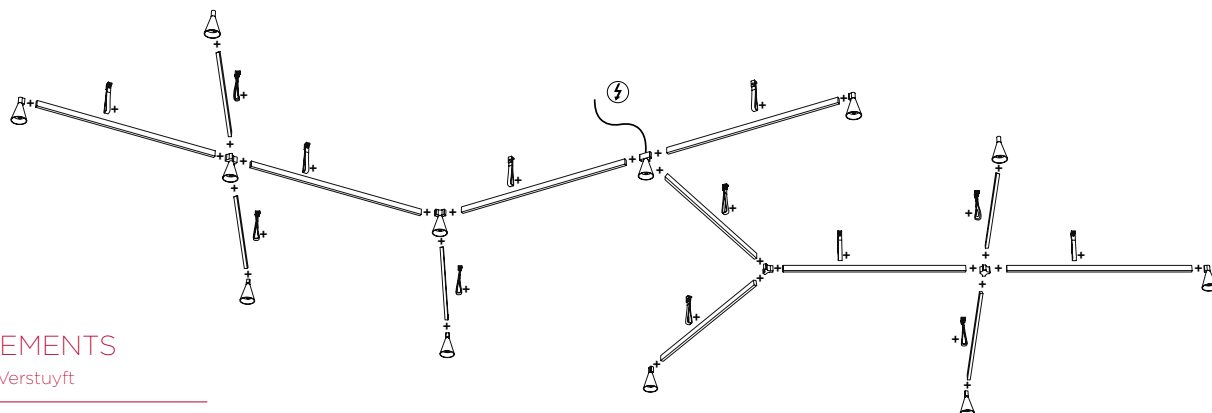
PLUGLIGHTING.COM
INFO@PLUGLIGHTING.COM

5665 MELROSE AVENUE
STE 108 LOS ANGELES 90038

P. 323 467 5635
F. 323 467 5634

LINE C





AUSTERE-ELEMENTS

Design by Hans Verstuyft

Material

brass



Finish

brass

Lightsource

1 x LED array (included) 6,2W
warm white : 2700K - 600lm - CRI >93

Connection

350mA - driver included

Specifications

indoor
ceiling mounting
class III
IP40