

## MINI BOLLARD

The Mini Bollard (95mm) PURE LED is ideal for garden edges. The acrylic lens reflects light at two angles through an anti-glare mesh directly onto the ground and horizontally to illuminate the surrounding landscape. It is not suited for ground installation.



### DETAILS.

#### FINISHES AVAILABLE IN:

ALUMINUM POWDERCOAT- BLACK, BRONZE, OLIVE GREEN, WHITE, WHITE BIRCH, DARK GREY, SILVER STAR, CORTEN

SOLID COPPER

316 STAINLESS STEEL

SIZE: 2" H X Ø2 1/2"

BASE: 1 3/4" H

US RETRO BACKPLATE: Ø5" X 2 3/16" H

MAX 700MA, CRI 90

#### COLOR TEMPS AVAILABLE:

2700K, 3000K, 4000K

BEAM ANGLE: 360°

#### POWER OPTIONS:

S - SERIES, REMOTE DRIVER

D3 - 12V AC, 2W INTEGRAL DRIVER

D7 - 12V AC, 4W INTEGRAL DRIVER

\*REMOTE DRIVER WIRED IN SERIES. INTERNAL DRIVER WIRED IN PARALLEL.

IP66 - RATED FOR WET LOCATIONS.

\*OTHER ACCESSORIES AND LAMP OPTIONS AVAILABLE.

UL LISTED



**II P L**

PLUGLIGHTING.COM  
INFO@PLUGLIGHTING.COM

5665 MELROSE AVENUE  
STE 108 LOS ANGELES 90038

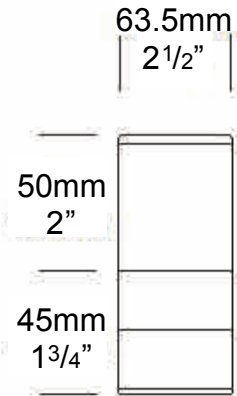
P. 323 467 5635  
F. 323 467 5634

# Mini Bollard

## PURELED SPECIFICATIONS

<b>LED Chip</b>	Cree XPG-3 Plug and Play field replaceable LED board
<b>Luminaire Output</b>	120 Lumens @ 700mA (2 watts), delivered from luminaire with unobstructed beam.
<b>Lumens Per Watt</b>	60 Lumens minimum @ 2 watts , delivered from luminaire with unobstructed beam
<b>CRI (3000K)</b>	90+
<b>Colour Temperatures</b>	2700K, 3000K, 4000K
<b>Beam Angles</b>	360 degrees
<b>Ingress Protection</b>	IP66

<b>Warranty</b>	Electronics = 5 years Body Cop/SS = 10 years Body Aluminium = 5 years
<b>Standards</b>	AS/NZS 61046 cUL 1838, 2108 CSA C22.2 No.250.7, No.250.0-08 CE



## PRODUCT CONFIGURATION

Please fill in appropriate codes into boxes provided

Cat. No. BOLMINI/L

Luminaire	Power	Material/ Finish	Beam	Colour	Accessories
<input type="text" value="BOLMINI/L"/>	<input type="text"/>	<input type="text"/>	<input type="text"/>	<input type="text"/>	<input type="text"/>
<b>S</b> SERIES, REMOTE DRIVER <b>D3</b> 12VAC, 1W INTEGRAL <b>D7</b> 12VAC, 2W INTEGRAL		<b>ALUMINIUM</b> <b>EBK</b> BLACK <b>EBZ</b> BRONZE <b>EOGR</b> OLIVE GREEN <b>EWH</b> WHITE <b>EWB</b> WHITE BIRCH <b>EDG</b> DARK GREY <b>ESTAR</b> SILVER STAR <b>ECT</b> CORTEN <b>COP</b> SOLID COPPER <b>SS</b> STAINLESS STEEL	<b>360</b> 360°	<b>2</b> 2700K <b>3</b> 3000K <b>4</b> 4000K	<b>CJK</b> CABLE JOINT KIT <b>BOLOP</b> OPAQUE LENS <b>HOOD140C</b> HOOD 140MM CONTOURED <b>HOOD140S</b> HOOD 140MM SMOOTH <b>FM90</b> EXTERNAL FLANGE MOUNT 90
<div style="border: 1px solid black; padding: 5px;"> <p><b>SERIES, REMOTE DRIVER REQUIRED:</b> Constant current driver Individual fixtures require 3vdc @ 700mA maximum <b>12VAC INTEGRAL DRIVER:</b> Hunza Buckbullet driver (included) Input: 12VAC, 3watt total Output: 3vdc @ D3=350mA, D7=700mA</p> </div>					
<div style="border: 1px solid black; padding: 5px;"> <p><b>OTHER LAMP OPTIONS:</b> BOLMINI/H - G4 Halogen 12V Lamp BOLMINI/GL - G4 LED Retrofit 12V Lamp (lamps vary by market - please refer to supplier for details)</p> </div>					

[Click here for halogen specification sheet](#)

[Click here for 240v Remote Power Supply Guidance Charts](#)

[Click here for USA Remote Power Supply Guidance Charts](#)

# LUMINAIRE CONSTRUCTION

**CNC machined from one of the following metals:**

**Aluminium:**

Body: high corrosion resistant 63.5 (2½") x 10mm (3/8") aluminium.

End cap: solid aluminium 63.5 (2½") rod with chromate substrate and high UV resistant polyester powder coat.

Colours:

Black, Bronze, Silver Star, White, White Birch, Olive Green, Dark Grey, Corten.

**Copper:**

Body: solid copper 63.5mm (2½") x 10mm (3/8").

End cap: solid copper 63.5 (2½") rod.

**316 Stainless Steel**

Body: 316 stainless steel 63.5mm (2½") x 9mm (3/8").

End cap: 316 stainless steel 63.5 (2½") rod.

**Anti-glare hood:**

140mm (5½") x 1.2mm (1/16") handspun aluminium, copper or stainless steel. No upward light or glare projected.

**Lens:**

UV stable polycarbonate lens with anti-glare mesh and dual angle reflector projects light horizontally and at 45° onto the ground.

**Gaskets:**

Silicone, iron impregnated 220°C (428°F)

**Mounting**

To be mounted on top of posts, railings, etc. It is not suited for ground installation.

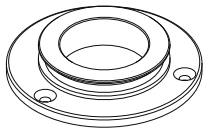
**Luminaire Weight:**

Alum: 0.370kg (13oz)

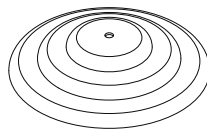
Cop: 0.600kg (1lb 5oz)

SS: 0.500kg (1lb 2oz)

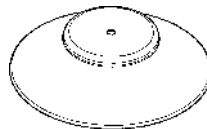
## ACCESSORIES



Flange Mount 90



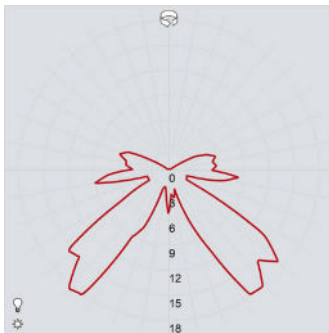
Hood 140mm Contoured



Hood 140mm Smooth

## BEAM ANGLES

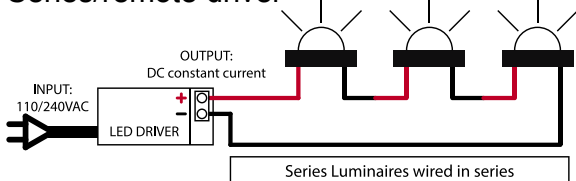
IES files available for download: [hunzalighting.com/downloads](http://hunzalighting.com/downloads)



Polycarbonate lens

## WIRING GUIDE

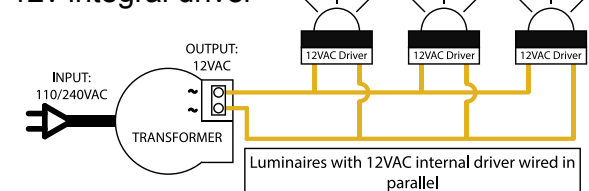
**Series/remote driver**



Diagrams are a guide only, wire colours and polarity may change depending on fixture and country

Available for download: [hunzalighting.com/downloads](http://hunzalighting.com/downloads)

**12v integral driver**

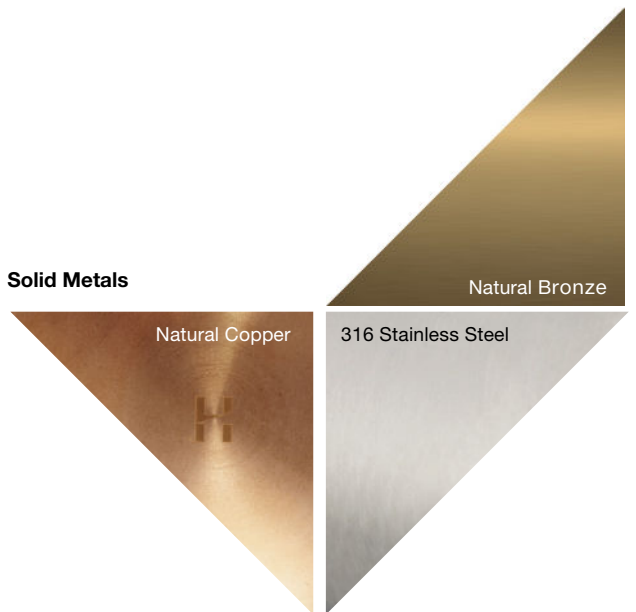


## FINISHES

### Powdercoated Aluminium



### Solid Metals



- Due to the limitation of print and screen resolution these colours should be used as a general guide only
- Solid copper and bronze are natural finishes designed to gradually weather & patina
- Solid stainless steel may acquire a surface tarnish in certain environments. Regular washing is recommended to avoid this.