



## HL-369-2B

Solid brass MR16 adjustable accent light with integral glare shield. Suitable for wet location installations. Other standard finishes available. LED version also available.

### DETAILS.

**MATERIAL: MACHINED BRASS**  
**FINISH: N – NATURAL BRASS**

**SHADE SIZE: Ø2 1/4" X 6 11/16" H; 1 3/8" STEM**

**50W MAX, BI-PIN GX5.3 BASE (BULB NOT INCLUDED)**  
**12VAC TRANSFORMER REQUIRED – NOT INCLUDED.**

**RATED FOR WET/DAMP/DRY LOCATIONS.**

**\*OTHER ACCESSORIES AND MOUNTING OPTIONS AVAILABLE.**  
**ETL LISTED**

HL-369-2B



**IIPL**

PLUGLIGHTING.COM  
INFO@PLUGLIGHTING.COM

5665 MELROSE AVENUE  
STE 108 LOS ANGELES 90038

P. 323 467 5635  
F. 323 467 5634

## SPECIFICATIONS

### DESCRIPTION:

Compact MR16 adjustable accent fixture with integral angled glare shield. Suitable for wet/damp/dry location installations.

### MATERIAL:

Standard overall material is 6061 aluminum.  
**HL-369** - Machined Aluminum (Standard)  
**HL-369-2b** - Machined Brass

### FINISH:

**AA** - Anodized Satin Aluminum  
**AP** - Powder Coat Aluminum  
**BK** - Powder Coat Black  
**BZ** - Powder Coat Bronze  
**WT** - Powder Coat White  
**N** - Natural, for Stainless Steel and Brass

### HALOGEN LAMPING OPTION:

Lamp Type - 12V halogen MR16 lamp, bi-pin GX5.3 base, 50W max, not included (standard).

### LED OPTIONS

Integral high output LED, warm white 85 CRI (3000K CCT) standard, others available.

**3LED** - 3W LED - 180 lumens  
**8LED** - 8W LED - 300 lumens  
**8LED-E** - 8.4W LED - 565 lumens

### OPTICS

3LED and 8LED:

**SP** - Spot, 12°  
**NF** - Narrow Flood, 24°  
**FL** - Flood, 36°

8LED-E:

**SP** - Spot 14°  
**NF** - Narrow Flood, 25°  
**MF** - Medium Flood, 30°  
**FL** - Flood, 40°

### VOLTAGE:

12 - 12 VAC output transformer required, not included.

### MOUNTING:

Fixture is designed with a 1/2-NPS adjustable mounting stem.

### OPTIONS:

Lenses/Louvers/Color Filters  
**LA-1** - Hexcell Louver (Black)  
**LA-2** - Prismatic lens  
**LA-3** - Linear spread lens  
**LA-4** - Soft focus lens (diffused)  
**LA-5** - Moonlight lens  
**LA-6** - Blue lens

See fixture accessories for more information.

### SAMPLE ORDER SPECIFICATION:

HL-369-BZ-12-LA-1

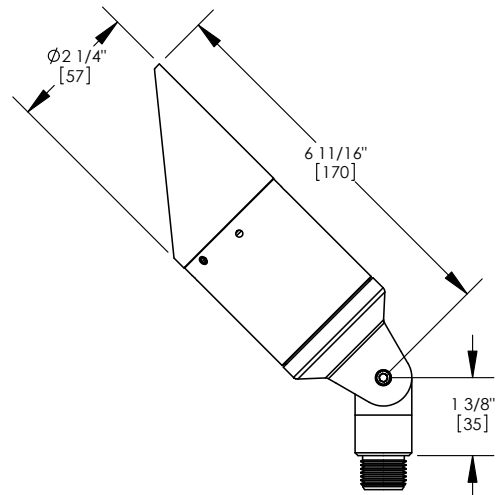
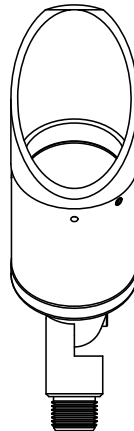
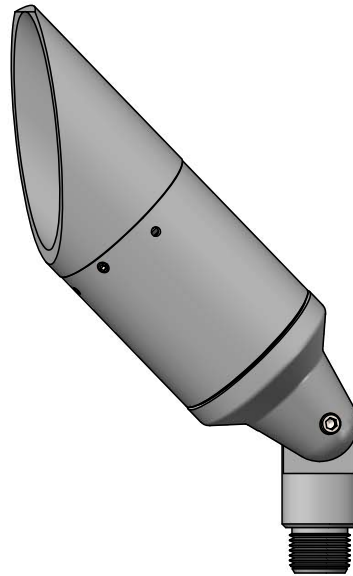
### RATING:

Wet/damp/dry location.



Intertek

MADE IN THE USA



CATALOG NUMBER:

**HL-369**

## Standard Finishes



AA - Anodized Satin Aluminum



AP - Aluminum Powder Coat

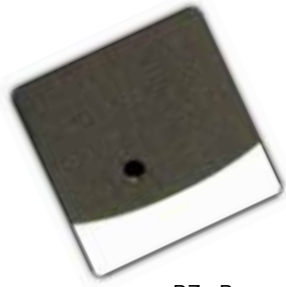
## Natural Finishes



N - Natural Brass



BK - Black Powder Coat



BZ - Bronze Powder Coat

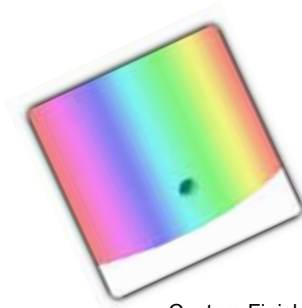


N - Natural Stainless Steel



WT - White Powder Coat

## Custom Finishes



Custom Finishes

