



HL-336-LED

LED surface mount accent light with 1/2-NPS threaded nipple. Mounts to standard fittings and junction boxes. Installations as a up or down light. Custom finish available upon request. Halogen version also available.

DETAILS.

MATERIALS AVAILABLE IN:

MACHINED ALUMINUM

MACHINED BRASS

MACHINED STAINLESS STEEL

FINISHES AVAILABLE IN:

BK – BLACK POWDER COAT

BZ – BRONZE POWDER COAT

WT – WHITE POWDER COAT

AA – ANODIZED SATIN ALUMINUM

AP – ALUMINUM POWDER COAT

N – NATURAL, BRASS OR STAINLESS

SHADE SIZE: Ø2 1/4" X 4" H

*DOES NOT COVER US J-BOX.

LED OPTIONS, 3000K 85 CRI:

3W = 180 LM

8W = 300 LM

8E (8.4W) = 565 LM

OPTIC OPTIONS:

3W/8W – 12° SPOT, 24° NARROW FLOOD, 36° FLOOD

8E – 14° SPOT, 25° NARROW FLOOD, 30° MEDIUM FLOOD, 40° FLOOD

DIMMING ELV/MLV

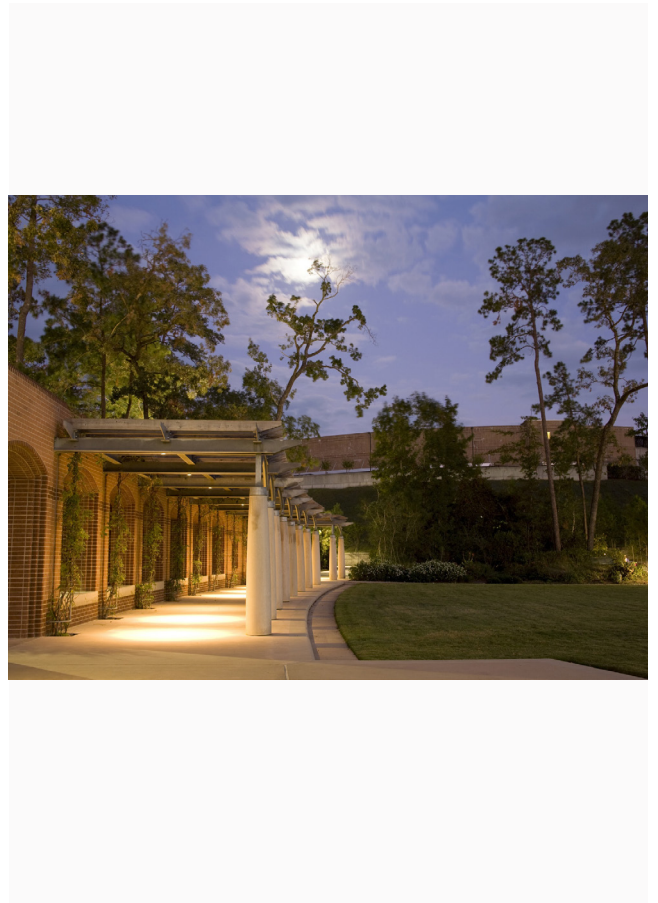
12VAC TRANSFORMER REQUIRED – NOT INCLUDED.

RATED FOR WET/DAMP/DRY LOCATIONS.

*OTHER ACCESSORIES AND MOUNTING OPTIONS AVAILABLE.

ETL LISTED

HL-336-LED



II P L

PLUGLIGHTING.COM
INFO@PLUGLIGHTING.COM

5665 MELROSE AVENUE
STE 108 LOS ANGELES 90038

P. 323 467 5635
F. 323 467 5634

SPECIFICATIONS

DESCRIPTION:

Compact surface mount MR16 accent light.
Suitable for wet/damp/dry location installations.

MATERIAL:

Standard overall material is 6061 aluminum.

HL-336 - Machined Aluminum (standard).

HL-336-2b - Machined Brass

HL-336-1 - Machined Stainless Steel.

FINISH:

AA - Anodized Satin Aluminum

AP - Powder Coat Aluminum

BK - Powder Coat Black

BZ - Powder Coat Bronze

WT - Powder Coat White

N - Natural Brass or Stainless

HALOGEN LAMPING OPTION:

Lamp Type - 12V halogen MR16 lamp, bi-pin GX5.3 base, 50W max, not included (standard).

LED OPTIONS

Integral high output LED, warm white 85 CRI (3000K CCT) standard, others available.

3LED - 3W LED - 180 lumens

8LED - 8W LED - 300 lumens

8LED-E - 8.4W LED - 565 lumens

OPTICS

3LED and 8LED:

SP - Spot, 12°

NF - Narrow Flood, 24°

FL - Flood, 36°

8LED-E:

SP - Spot 14°

NF - Narrow Flood, 25°

MF - Medium Flood, 30°

FL - Flood, 40°

VOLTAGE:

12 - 12 VAC output transformer required, not included.

MOUNTING:

Fixture is designed with a fixed 1/2" NPS mount.

OPTIONS:

Glare shields

GL-10 - Short Angled, aluminum

GL-11 - Angled, aluminum

GL-13 - Straight, aluminum

Lenses/Louvers/Color Filters

LA-1 - Hexcell Louver (Black)

LA-2 - Prismatic lens

LA-3 - Linear spread lens

LA-4 - Soft focus lens (diffused)

LA-5 - Moonlight lens

LA-6 - Blue lens

See fixture accessories for more information.

SAMPLE ORDER SPECIFICATION:

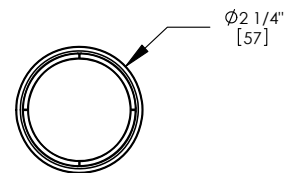
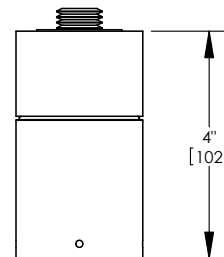
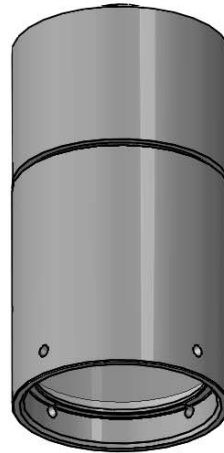
HL-336-BZ-12-GL-10-LA-2

RATING:

Wet/damp/dry location.



MADE IN THE USA



CATALOG NUMBER:

HL-336

Standard Finishes



AA - Anodized Satin Aluminum

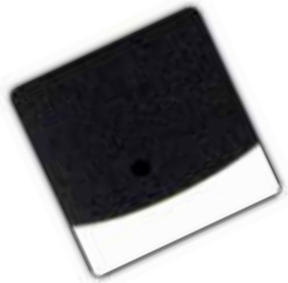


AP - Aluminum Powder Coat

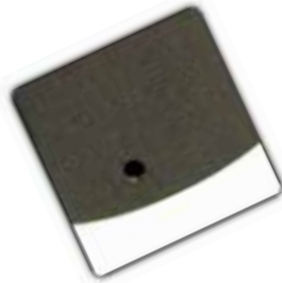
Natural Finishes



N – Natural Brass



BK - Black Powder Coat



BZ - Bronze Powder Coat



N – Natural Stainless Steel



WT - White Powder Coat

Custom Finishes



Custom Finishes

