



## C01501-LED

LED hanging pendant fixture equipped with 15ft SJO cord to hang from tree or surface. Halogen version also available.

### DETAILS.

#### MATERIALS AVAILABLE IN:

MACHINED ALUMINUM

#### FINISHES AVAILABLE IN:

BK – BLACK POWDER COAT

BZ – BRONZE POWDER COAT

WT – WHITE POWDER COAT

AA – ANODIZED SATIN ALUMINUM

AP – ALUMINUM POWDER COAT

SIZE: Ø1 11/16" X 3 13/16" H

#### OPTIC OPTIONS:

3W 3000K – 12° SPOT, 24° NARROW FLOOD, 36° FLOOD

#### DIMMING: MLV

12VAC TRANSFORMER REQUIRED – NOT INCLUDED.

RATED FOR WET/DAMP/DRY LOCATIONS.

\*OTHER ACCESSORIES AVAILABLE.

C01501-LED



**II P L**

PLUGLIGHTING.COM  
INFO@PLUGLIGHTING.COM

5665 MELROSE AVENUE  
STE 108 LOS ANGELES 90038

P. 323 467 5635  
F. 323 467 5634

## SPECIFICATIONS

### DESCRIPTION:

MR11 hanging pendant fixture. Suitable for wet/damp/dry location installation.

### MATERIAL:

Standard overall material is 6061 aluminum.  
**C01501** - Machined Aluminum

### FINISH:

**AA** - Anodized Satin Aluminum  
**AP** - Powder Coat Aluminum  
**BK** - Powder Coat Black  
**BZ** - Powder Coat Bronze  
**WT** - Powder Coat White

### HALOGEN LAMPING OPTION:

Lamp Type - 12V halogen MR11 lamp, bi-pin  
G4 base, 35W max, not included (standard).

### LED OPTIONS:

Integral high output 3W LED, warm white  
(3000K CCT) standard, others available.

#### Optics

**SP** - Spot, 12°  
**NF** - Narrow Flood, 24°  
**FL** - Flood, 36°

### VOLTAGE:

12 - 12 VAC output transformer required,  
not included. 15ft SJO cord, included.

### MOUNTING:

Fixture is equipped with a cord to hang from a  
tree/surface.

### OPTIONS:

#### Lenses/ Color Filters

**LA-2-11** - Prismatic lens  
**LA-3-11** - Linear spread lens  
**LA-4-11** - Soft focus lens (diffused)  
**LA-5-11** - Moonlight lens  
**LA-6-11** - Blue lens

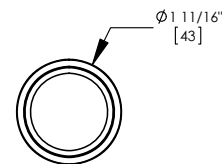
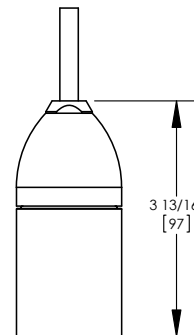
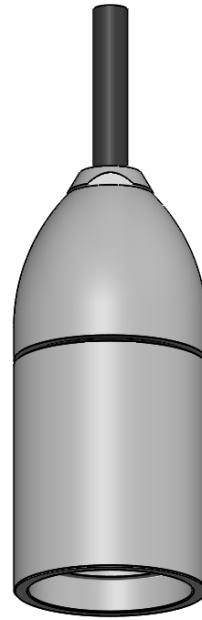
#### Louvers

**LA-1-11** - Hexcell Louver (Black)  
See fixture accessories for more informaton.

### RATING:

Wet/damp/dry location.

### MADE IN THE USA



CUSTOM NUMBER:

**C01501**

## Standard Finishes

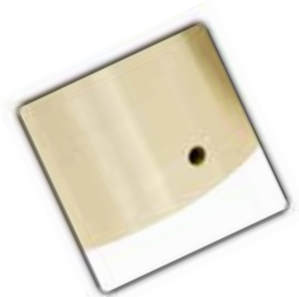


AA - Anodized Satin Aluminum

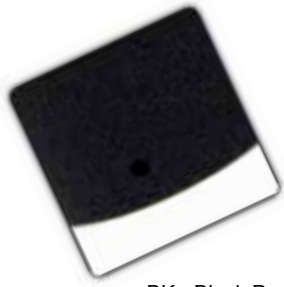


AP - Aluminum Powder Coat

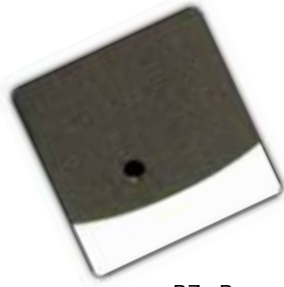
## Natural Finishes



N – Natural Brass



BK - Black Powder Coat



BZ - Bronze Powder Coat

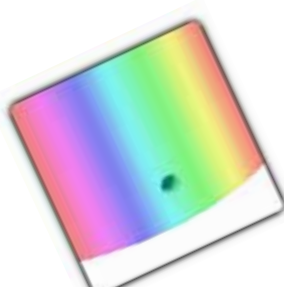


N – Natural Stainless Steel



WT - White Powder Coat

## Custom Finishes



Custom Finishes

