



# MEDINA

A shapely collection of Boteroesque contours and generous dimensions. This two suspension chandeliers have a diameter of 47" (3 light) and 59" diameter (5 light) with oversized lampshades and can be matched with wall lamps of two different dimensions. The family is rounded out by two desk lamps, both of which are also in two size variations. The chromed neck is typical of the entire line.

***When necessary, reinforce the ceiling.***

#### DETAILS.

#### FINISHES AVAILABLE IN:

CC - CRYSTAL

CA - CARAMEL

OO - GOLD (CLEAR WITH GOLD FRECKLES THROUGHOUT)

CG - COGNAC

#### SHADES:

BB - WHITE

MM - BROWN

NO - BLACK/GOLD

AZ - LIGHT BLUE

RS - PINK

GR - GREY

METAL FINISH: CL - POLISHED CHROME

5684/03 (3 ARM):

Ø47" X 43 1/2" H

3 X 100W E26 INCANDESCENT 120V

DIMMABLE, 51 LBS

5684/05 (5 ARM):

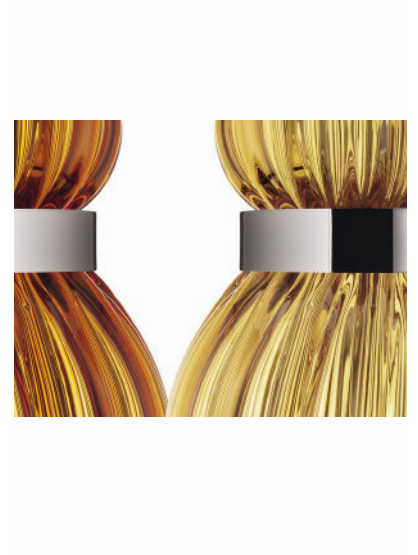
Ø59" X 43 1/2" H

5 X 100W E26 INCANDESCENT 120V

DIMMABLE, 70 LBS

UL LISTED

MEDINA



**II P L**

PLUGLIGHTING.COM  
INFO@PLUGLIGHTING.COM

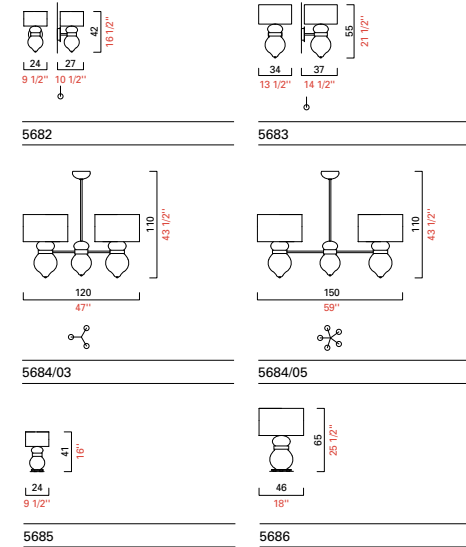
5665 MELROSE AVENUE  
STE 108 LOS ANGELES 90038

P. 323 467 5635  
F. 323 467 5634

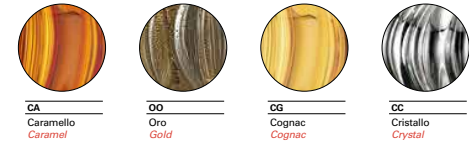
# MEDINA



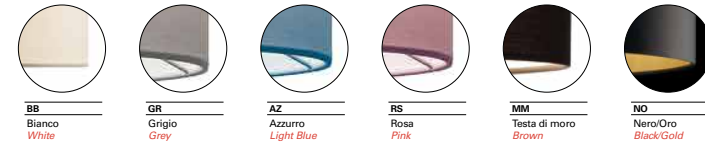
## MEDINA Modelli e misure Models and sizes



## Colori disponibili Available colours



## Paralumi Shades



## Finiture Finishing



II P L

PLUGLIGHTING.COM  
INFO@PLUGLIGHTING.COM

5665 MELROSE AVENUE  
STE 108 LOS ANGELES 90038

P. 323 467 5635  
F. 323 467 5634